

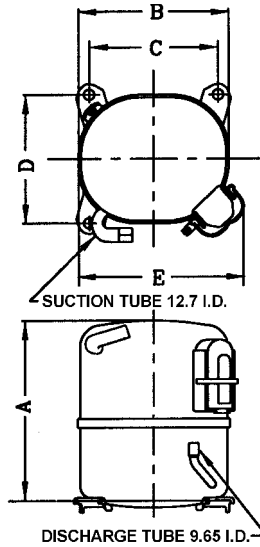


KULTHORN KIRBY PUBLIC CO.,LTD.

TECHNICAL SPECIFICATION

**HERMETIC
COMPRESSOR
WJ5513EK-2**

PRINCIPAL DIMENSIONS - mm



A	264
B	223
C	203
D	122
E	239

ELECTRICAL : 208-230 Volt. 60 Hz. 1 Phase

Nominal Performance

Cooling Capacity :	3,810	Watts (13,000)	BTU/Hr
	3,276	Kcal/Hr	
Power Input :	1,485	Watts	
Lock Rotor Amps :	32.00	Amps	
Rated Load Amps :	6.54	Amps	
COP :	2.57	Watts/ Watts	

Testing Conditions

Condensing Temperature :	54.4	° C
Evaporating Temperature :	+7.2	° C
Liquid Temperature :	46.1	° C
Return Gas Temperature :	35	° C
Ambient Temperature :	35	° C

Application

Evaporating Range :	HBP A/C	:	0° C t +13 ° C
			Heat Pump : -23.3° C t +13 ° C

Refrigerant :	R22
Expansion :	Capillary Tube
Compressor Cooling :	Fan

Compressor and Motor data

Compression Type :	Reciprocating
Displacement :	21.5 cc.
Bore :	39.37 mm.
Stroke :	17.7 mm.
Oil Type :	Mineral Oil
Oil Charge :	750 cc.
Motor Type :	P.S.C. ; 2 Pole 3500 r / m
Voltage Range :	198-264 Volts 60 Hz.
Winding Resistance at 25 ° C	

Start :	4.78	Ohms
Run :	1.97	Ohms

Weight with Oil :	21.60	Kg.
Weight with Oil and Accessories :	22.10	Kg.

Electrical Components

Motor Protector :

Type :	External Overload 3/4"
Model Number :	KME 664-17/C (MRA38157)
Open / Close :	140-150 / 70-52 ° C
1st Cycle trip :	28.5 Amps

Motor Starter (CSR Only) :

Type :	Potential Relay
Model Number :	KGE 680-7 (GE3ARR3-U3P2)
Pick Up :	162-175 Volts
Drop Out :	40-90 Volts
Terminal Cover :	KGM 901-1

Start Capacitor (CSR Only) :

	88-106	μ F	330	VAC.
--	--------	-----	-----	------

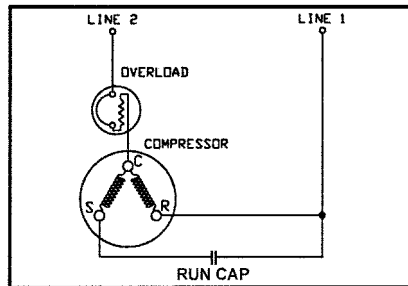
Run Capacitor :

	25	μ F	440	VAC.
--	----	-----	-----	------

Mounting Kit

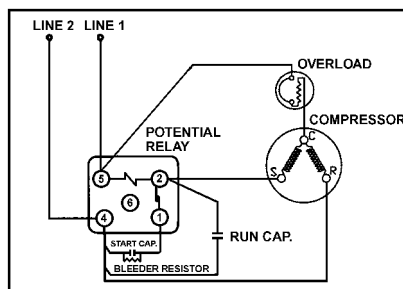
Rubber Grommet :	KGM 905-1
Sleeve Grommet :	KGM 903-1

SCHEMATIC WIRING DIAGRAM - P.S.C.



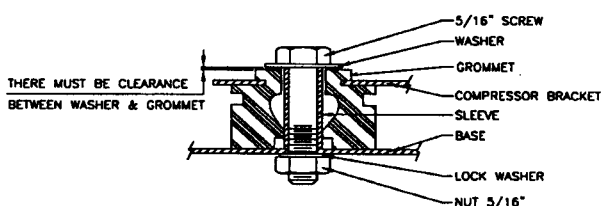
Low Torque Start

SCHEMATIC WIRING DIAGRAM - C.S.R.



Option for High Torque Start Only

MOUNTING KIT



THERE MUST BE CLEARANCE BETWEEN WASHER & GROMMET

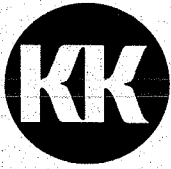
Since we are constantly improving our product ,
the specification are subject to change without notice.

REV. DATE

01-03-03

C / N No.

0210/03

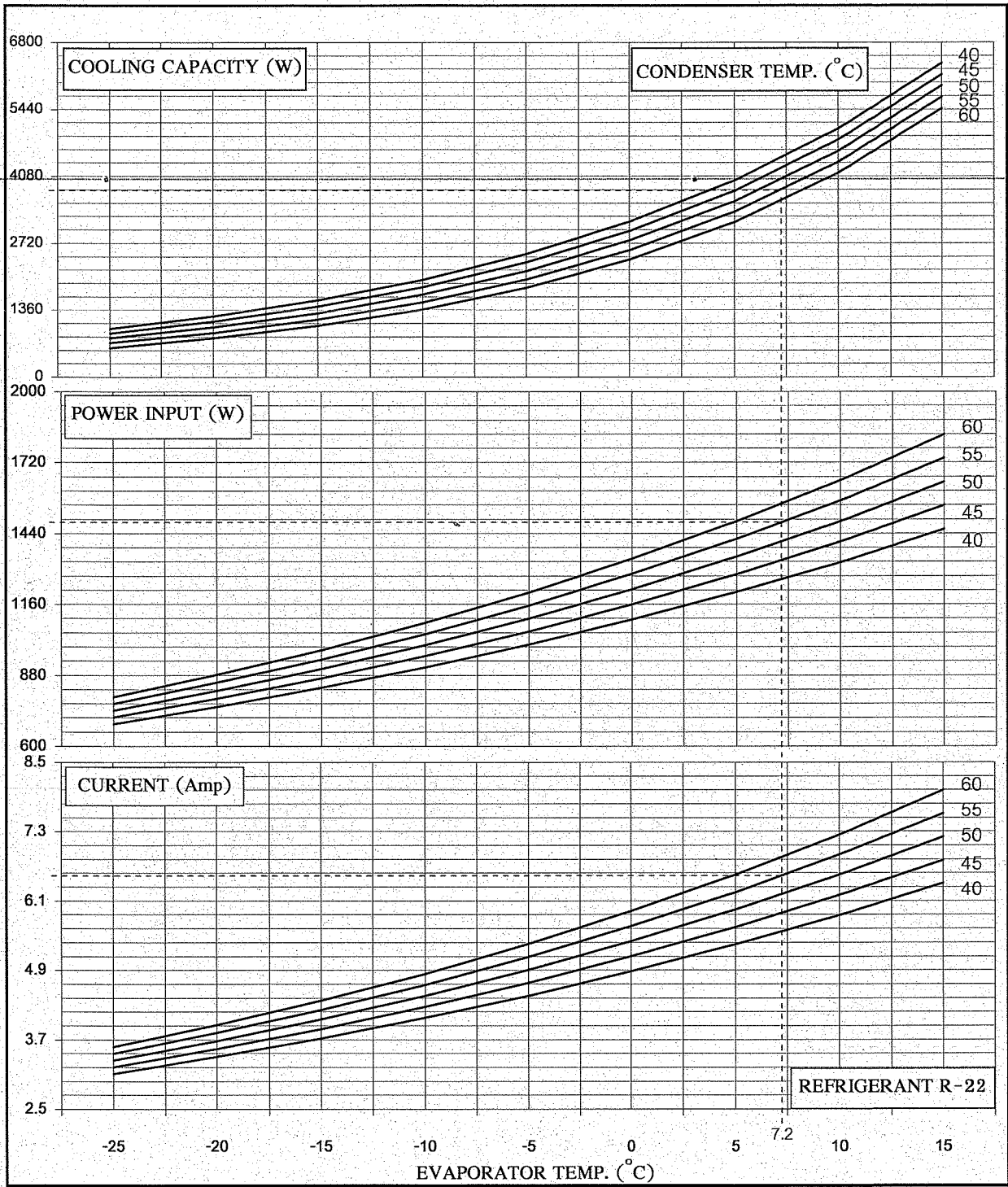


KULTHORN KIRBY PUBLIC CO.,LTD.

HERMETIC
COMPRESSOR
WJ 5513EK-2

PERFORMANCE CURVE

Electrical :208-230 Volt 60 Hz 1 Phase Motor Type P. S.C



Cooling Capacity	3810	W	} At rating Condition	Prepared by : <i>[Signature]</i>	Date: 28 / 10 / 06
Power Input	1485	W		Approved by : <i>[Signature]</i>	Date: 28 / 10 / 06
Current	6.54	Amp		(Supervisor)	

F-QSO-214 | 1/10/04 | G

UNCONTROLLED COPY