



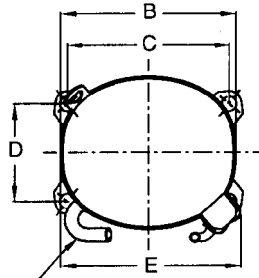
KULTHORN KIRBY PUBLIC CO.,LTD.

TECHNICAL SPECIFICATION

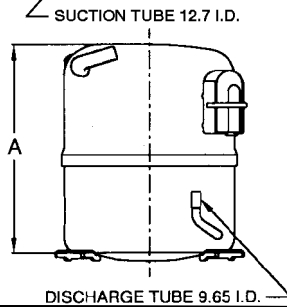
HERMETIC COMPRESSOR

WJ5510EK-2

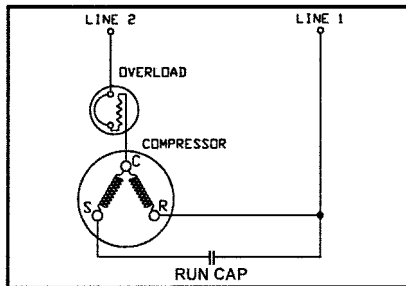
PRINCIPAL DIMENSIONS - mm



A	264
B	223
C	203
D	122
E	239

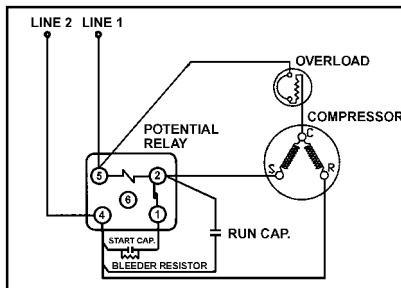


SCHEMATIC WIRING DIAGRAM - P.S.C.



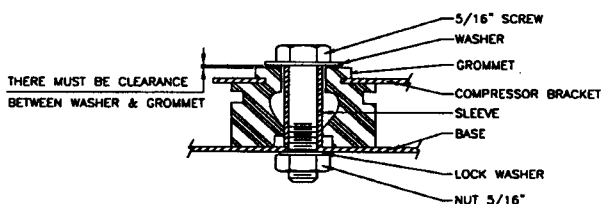
Low Torque Start

SCHEMATIC WIRING DIAGRAM - C.S.R.



Option for High Torque Start Only

MOUNTING KIT



ELECTRICAL : 208-230 Volt. 60 Hz. 1 Phase

Nominal Performance

Cooling Capacity :	3,390	Watts (11,567)	BTU/Hr
	2,915	Kcal/Hr	
Power Input :	1,380	Watts	
Lock Rotor Amps :	37.30	Amps	
Rated Load Amps :	7.07	Amps	
COP :	2.46	Watts/ Watts	

Testing Conditions

Condensing Temperature :	54.4	°C
Evaporating Temperature :	+7.2	°C
Liquid Temperature :	46.1	°C
Return Gas Temperature :	35	°C
Ambient Temperature :	35	°C

Application

Evaporating Range :	HBP A/C	: 0 °C t +13 °C
	Heat Pump :	-23.3 °C t +13 °C

Refrigerant :	R22
Expansion :	Capillary Tube
Compressor Cooling :	Fan

Compressor and Motor data

Compression Type :	Reciprocating
Displacement :	19.8 cc.
Bore :	39.37 mm.
Stroke :	16.26 mm.
Oil Type :	Mineral Oil
Oil Charge :	750 cc.
Motor Type :	P.S.C. ; 2 Pole 3500 r / m
Voltage Range :	198-264 Volts 60 Hz.
Winding Resistance at 25 °C	

Start :	3.90 Ohms
Run :	1.57 Ohms

Weight with Oil :	20.82	Kg.
Weight with Oil and Accessories :	21.45	Kg.

Electrical Components

Motor Protector :

Type :	External Overload 3/4"
Model Number :	KME 664-17/C (MRA38157)
Open / Close :	140-150 / 70-52 °C
1st Cycle trip :	28.5 Amps

Motor Starter (CSR Only) :

Type :	Potential Relay
Model Number :	KGE 680-2 (GE3ARR3-U13A32)
Pick Up :	180-193 Volts
Drop Out :	40-90 Volts
Terminal Cover :	KGM 901-1

Start Capacitor (CSR Only) :

88-106	μ F	330	VAC.
--------	-----	-----	------

Run Capacitor :

15	μ F	440	VAC.
----	-----	-----	------

Mounting Kit

Rubber Grommet :	KGM 905-1
Sleeve Grommet :	KGM 903-1

Since we are constantly improving our product ,
the specification are subject to change without notice.

REV. DATE

15-03-03

C / N No.

0050/03



KULTHORN KIRBY PUPBLIC CO.,LTD.

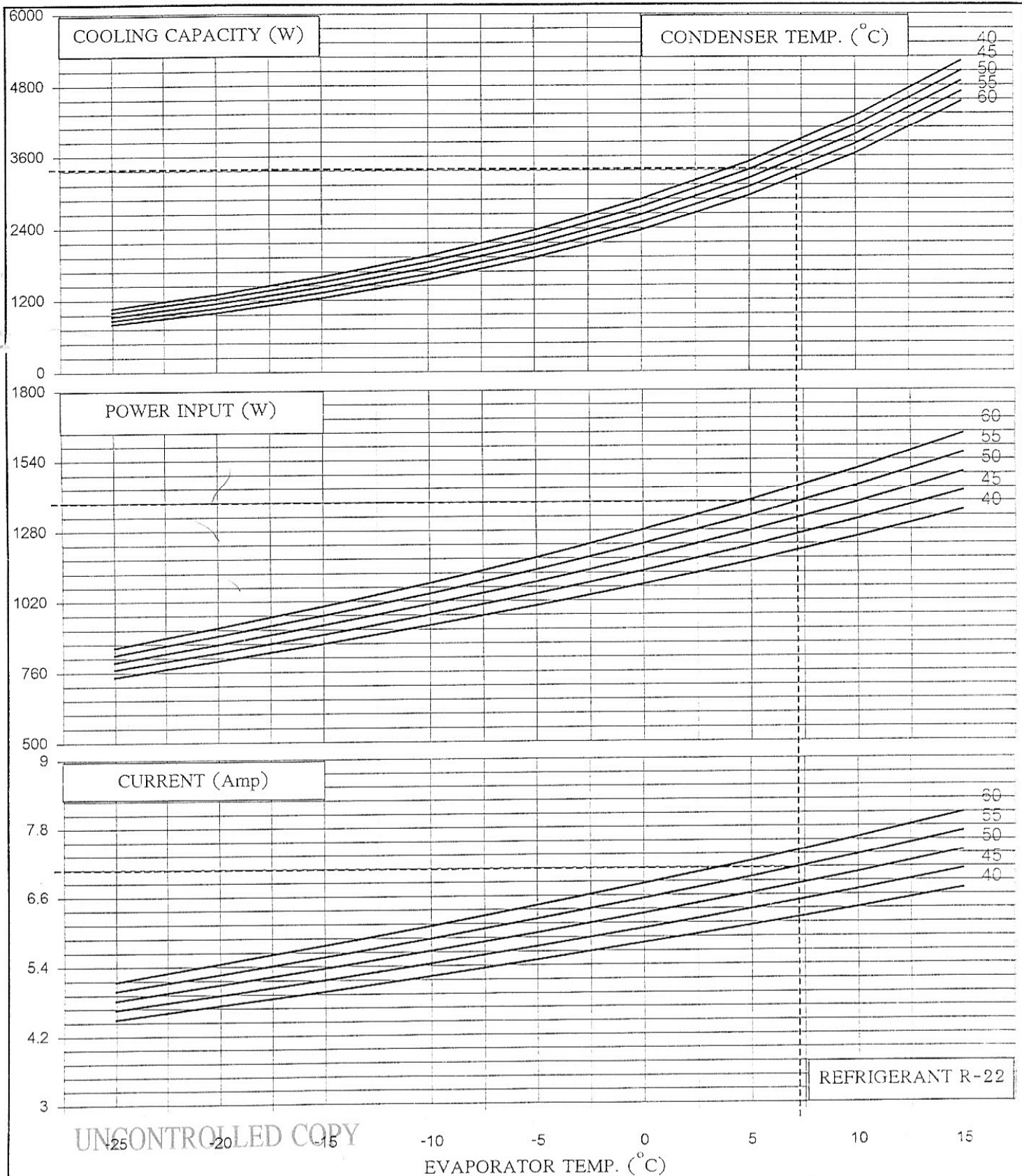
THAILAND - *Tecumseh* LICENSEE

HERMETIC
COMPRESSOR

WJ 5510EK-2

PERFORMANCE CURVES

Electrical : 208-230 Volt 60 Hz 1 Phase Motor Type P.S.C



UNCONTROLLED COPY

Cooling Capacity	3390 W	} At rating Condition
Power Input	1380 W	
Current	7.07 Amp	

PERFORMANCE CURVES
FOR MOTOR COMPRESSOR

Prepared by: *P. Out* Date: 27/03/03
 Approved by: *S. Out* Date: 26/03/03
 (Motor Design Supervisor)