



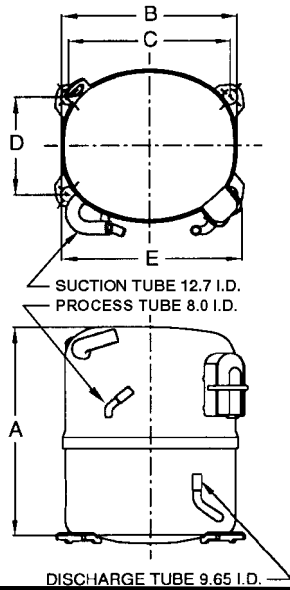
# KULTHORN KIRBY PUBLIC CO.,LTD.

## TECHNICAL SPECIFICATION

# HERMETIC COMPRESSOR

## WJ2455ZK-2P

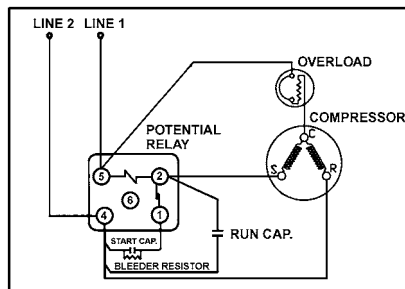
### PRINCIPAL DIMENSIONS - mm



A	264
B	223
C	203
D	122
E	239

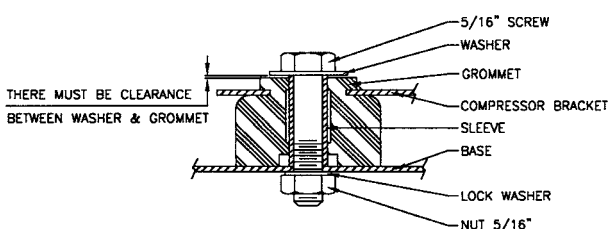
### SCHEMATIC WIRING DIAGRAM -

### SCHEMATIC WIRING DIAGRAM - C.S.R.



### High Torque Start

### MOUNTING KIT



**ELECTRICAL :** 208-230 Volt. 60 Hz. 1 Phase

### Nominal Performance

Cooling Capacity :	1,590	Watts ( 5,425 )	BTU/Hr
	1,367	Kcal/Hr	
Power Input :	1,275	Watts	
Lock Rotor Amps :	47.30	Amps	
Rated Load Amps :	5.94	Amps	
COP :	1.25	Watts/ Watts	

### Testing Conditions

Condensing Temperature :	54.4	° C
Evaporating Temperature :	-23.3	° C
Liquid Temperature :	32.2	° C
Return Gas Temperature :	32.2	° C
Ambient Temperature :	32.2	° C

### Application

Evaporating Range :	<b>LBP</b>	@ -35 ° C to -10 ° C
Refrigerant :	R404A	
Expansion :	Capillary Tube	
Compressor Cooling :	Fan	

### Compressor and Motor data

Compression Type :	Reciprocating
Displacement :	30.5 cc.
Oil Type :	Polyolester Oil
Oil Charge :	750 cc.
Motor Type :	<b>C.S.R.</b> ; 2 Pole 3500 r / m
Voltage Range :	198-264 Volts 60 Hz.
Winding Resistance at 25 ° C	
Start :	4.18 Ohms
Run :	1.43 Ohms
Weight with Oil :	22.11 Kg.
Weight with Oil and Accessories :	22.86 Kg.

### Electrical Components

#### Motor Protector :

Type :	External Overload 3/4"
Model Number :	KME 664-17/C (MST16AG)
Open / Close :	140-150 / 70-52 ° C
1st Cycle trip :	28.5 Amps

#### Motor Starter (CSR Only) :

Type :	Potential Relay
Model Number :	KGE 680 (GE3ARR3-U3AT2)
Pick Up :	186-215 Volts.
Drop Out :	40-90 Volts.
Terminal Cover :	KGM 901-1
<b>Start Capacitor (CSR Only) :</b>	145-174 μ F 330 VAC.
<b>Run Capacitor :</b>	30 μ F 440 VAC.
<b>Disch. Resistor (Alternative) :</b>	15000 Ohms 2 W

### Mounting Kit

Rubber Grommet :	KGM 905-1
Sleeve Grommet :	KGM 903-1

Since we are constantly improving our product ,  
the specification are subject to change without notice.

REV. DATE

19-06-04

C / N No.

0133/04