

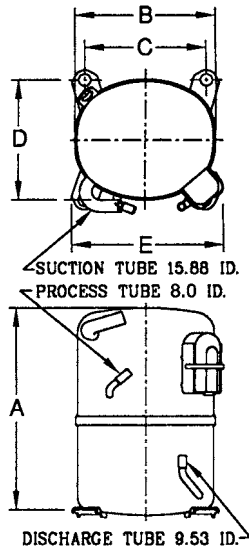


KULTHORN KIRBY PUBLIC CO.,LTD.

TECHNICAL SPECIFICATION

HERMETIC COMPRESSOR AW5532EK-P

PRINCIPAL DIMENSIONS - mm



A	324
B	223
C	192
D	192
E	239

ELECTRICAL : 220-240 Volt. 50 Hz. 1 Phase

Nominal Performance

Cooling Capacity :	7,870	Watts (26,852)	BTU/Hr
	6,767	Kcal/Hr	
Power Input :	2,678	Watts	
Lock Rotor Amps :	73.00	Amps	
Rated Load Amps :	12.85	Amps	
COP :	2.94	Watts/ Watts	

Testing Conditions

Condensing Temperature :	54.4	° C
Evaporating Temperature :	+7.2	° C
Liquid Temperature :	46.1	° C
Return Gas Temperature :	35	° C
Ambient Temperature :	35	° C

Application

Evaporating Range :	HBP A/C	:	0 ° C to +13 ° C
Heat Pump :		:	-23.3 ° C to +13 ° C

Refrigerant :	R22
Expansion :	Capillary Tube
Compressor Cooling :	Fan

Compressor and Motor data

Compression Type :	Reciprocating
Displacement :	53.5 cc.
Oil Type :	Mineral Oil
Oil Charge :	964 cc.
Motor Type :	P.S.C. ; 2 Pole 2850 r / m
Voltage Range :	198-264 Volts 50 Hz.
Winding Resistance at 25 ° C	
Start :	2.31 Ohms
Run :	0.82 Ohms

Weight with Oil :	29.38	Kg.
Weight with Oil and Accessories :	29.65	Kg.

Electrical Components

Motor Protector :

Type :	Internal Overload
Model Number :	KGE 656-2 (15HM1436-43)
Open / Close :	115-125 / 78-60 ° C
1st Cycle trip :	43 Amps (start) 78 Amps (main)

Motor Starter (CSR Only) :

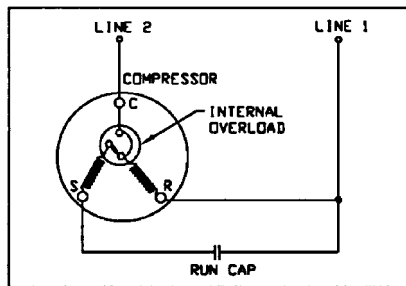
Type :	Potential Relay
Model Number :	KGE 680 (GE3ARR3-U3AT2)
Pick Up :	186-215 Volts.
Drop Out :	40-90 Volts.
Terminal Cover :	KGM 901-2

Start Capacitor (CSR Only) :	88-106	µ F	330	VAC.
Run Capacitor :	50	µ F	370/440	VAC.

Mounting Kit

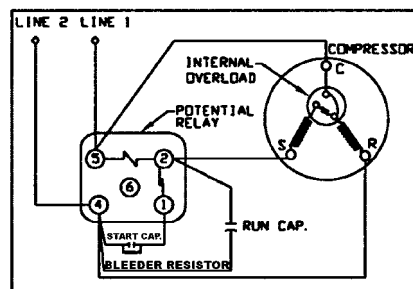
Rubber Grommet :	KGM 905
Sleeve Grommet :	KGM 903

SCHEMATIC WIRING DIAGRAM - P.S.C.



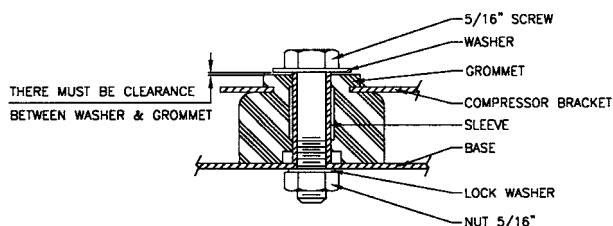
Low Torque Start

SCHEMATIC WIRING DIAGRAM - C.S.R.



Option for High Torque Only

MOUNTING KIT



Since we are constantly improving our product ,
the specification are subject to change without notice.

REV. DATE

22-08-02

C / N No.

0152/02