

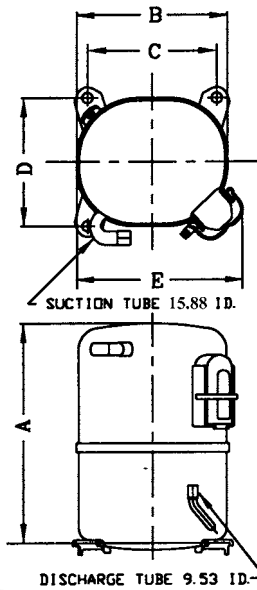


KULTHORN KIRBY PUBLIC CO.,LTD.

TECHNICAL SPECIFICATION

HERMETIC COMPRESSOR AW5530EK-2

PRINCIPAL DIMENSIONS - mm



A	324
B	223
C	192
D	192
E	239

ELECTRICAL : 208-230 Volt. 60 Hz. 1 Phase

Nominal Performance

Cooling Capacity :	8,900	Watts (30,367)	BTU/Hr
	7,653	Kcal/Hr	
Power Input :	3,035	Watts	
Lock Rotor Amps :	89.40	Amps	
Rated Load Amps :	14.50	Amps	
COP :	2.93	Watts/ Watts	

Testing Conditions

Condensing Temperature :	54.4	° C
Evaporating Temperature :	+7.2	° C
Liquid Temperature :	46.1	° C
Return Gas Temperature :	35	° C
Ambient Temperature :	35	° C

Application

Evaporating Range :	HBP A/C	:	0° C to +13 ° C
Heat Pump :		:	-23.3° C to +13 ° C

Refrigerant :	R22
Expansion :	Capillary Tube
Compressor Cooling :	Fan

Compressor and Motor data

Compression Type :	Reciprocating
Displacement :	50.6 cc.
Oil Type :	Mineral Oil
Oil Charge :	964 cc.
Motor Type :	P.S.C. ; 2 Pole 3500 r / m
Voltage Range :	198-264 Volts 60 Hz.
Winding Resistance at 25 ° C	
Start :	2.00 Ohms
Run :	0.61 Ohms
Weight with Oil :	28.80 Kg.
Weight with Oil and Accessories :	29.07 Kg.

Electrical Components

Motor Protector :

Type :	Internal Overload
Model Number :	KGE 656-11 (15HM1413-43)
Open / Close :	130-140 / 78-60 ° C
1st Cycle trip :	45 Amps (start) 83 Amps (main)

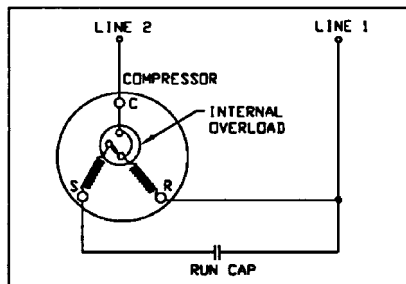
Motor Starter (CSR Only) :

Type :	Potential Relay
Model Number :	KGE 680-7 (GE3ARR3-U3P2)
Pick Up :	162-175 Volts.
Drop Out :	40-90 Volts.
Terminal Cover :	KGM 901-2
Start Capacitor (CSR Only) :	161-193 μ F 330 VAC.
Run Capacitor :	50 μ F 370/440 VAC.

Mounting Kit

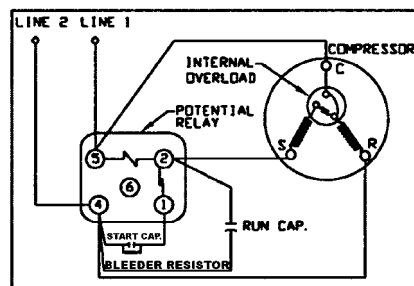
Rubber Grommet :	KGM 905
Sleeve Grommet :	KGM 903

SCHEMATIC WIRING DIAGRAM - P.S.C.



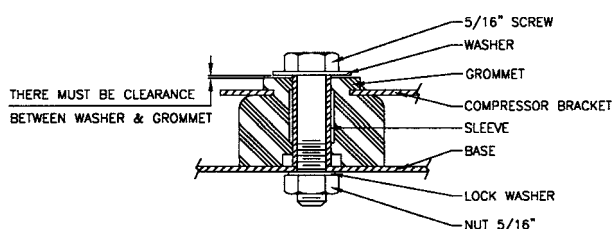
Low Torque Start

SCHEMATIC WIRING DIAGRAM - C.S.R.



Option for High Torque Start Only

MOUNTING KIT



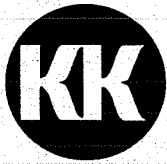
Since we are constantly improving our product ,
the specification are subject to change without notice.

REV. DATE

20-05-03

C / N No.

0110/03

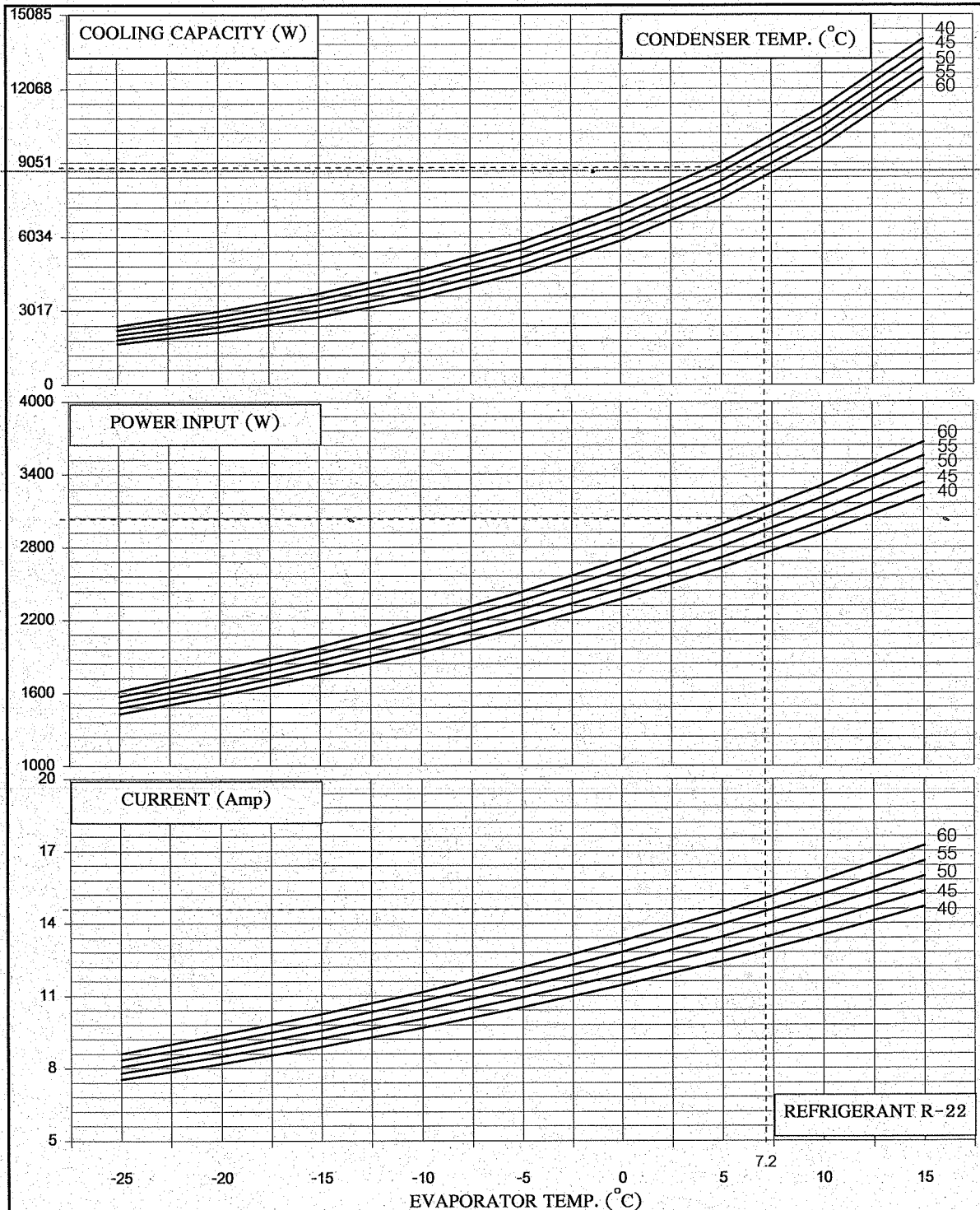


KULTHORN KIRBY PUBLIC CO., LTD.

**HERMETIC
COMPRESSOR
AW 5530EK-2**

PERFORMANCE CURVE

Electrical :208-230 Volt 60 Hz 1 Phase Motor Type P.S.C



Cooling Capacity	8900	W	} At rating Condition	Prepared by : <i>[Signature]</i>	Date: 28 / 10 / 06
Power Input	3035	W		Approved by : <i>[Signature]</i>	Date: 28 / 10 / 06
Current	14.5	Amp		(Supervisor)	

F-QSO-214 | 1/10/04 | G

UNCONTROLLED COPY