

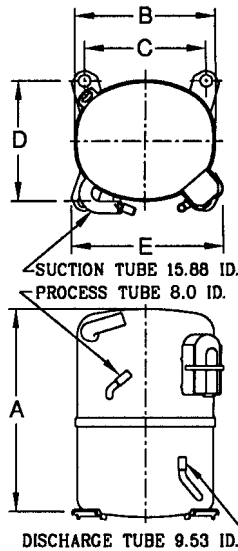


# KULTHORN KIRBY PUBLIC CO.,LTD.

## TECHNICAL SPECIFICATION

# HERMETIC COMPRESSOR AW5524EK-2P

### PRINCIPAL DIMENSIONS - mm



A	324
B	223
C	192
D	192
E	239

**ELECTRICAL :** 208-230 Volt. 60 Hz. 1 Phase

### Nominal Performance

Cooling Capacity :	7,100	Watts ( 24,225 )	BTU/Hr
	6,105	Kcal/Hr	
Power Input :	2,420	Watts	
Lock Rotor Amps :	76.00	Amps	
Rated Load Amps :	12.00	Amps	
COP :	2.93	Watts/ Watts	

### Testing Conditions

Condensing Temperature :	54.4	° C
Evaporating Temperature :	+7.2	° C
Liquid Temperature :	46.1	° C
Return Gas Temperature :	35	° C
Ambient Temperature :	35	° C

### Application

Evaporating Range :	<b>HBP A/C</b>	:	0° C to +13 ° C
Heat Pump :		:	-23.3° C to +13 ° C

Refrigerant :	R22
Expansion :	Capillary Tube
Compressor Cooling :	Fan

### Compressor and Motor data

Compression Type :	Reciprocating
Displacement :	43.1 cc.
Oil Type :	Mineral Oil
Oil Charge :	964 cc.
Motor Type :	<b>P.S.C.</b> ; 2 Pole 3500 r / m
Voltage Range :	198-264 Volts 60 Hz.
Winding Resistance at 25 ° C	
Start :	2.65 Ohms
Run :	0.81 Ohms
Weight with Oil :	26.93 Kg.
Weight with Oil and Accessories :	27.23 Kg.

### Electrical Components

#### Motor Protector :

Type :	Internal Overload
Model Number :	KGE 656-12 (15HM1466-43)
Open / Close :	115-125 / 78-60 ° C
1st Cycle trip :	37 Amps (start) 58 Amps (main)

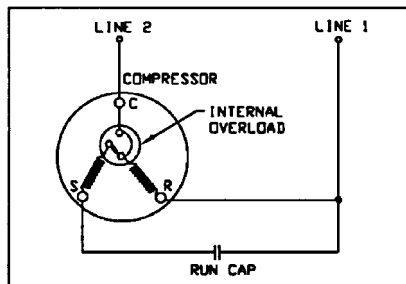
#### Motor Starter (CSR Only) :

Type :	Potential Relay
Model Number :	KGE 680-7 (GE3ARR3-U3P2)
Pick Up :	162-175 Volts.
Drop Out :	40-90 Volts.
Terminal Cover :	KGM 901-2
<b>Start Capacitor (CSR Only) :</b>	161-193 μ F 330 VAC.
<b>Run Capacitor :</b>	40 μ F 370/440 VAC.

### Mounting Kit

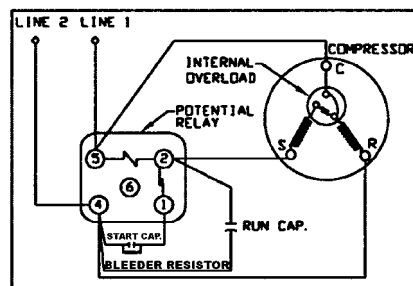
Rubber Grommet :	KGM 905
Sleeve Grommet :	KGM 903

### SCHEMATIC WIRING DIAGRAM - P.S.C.



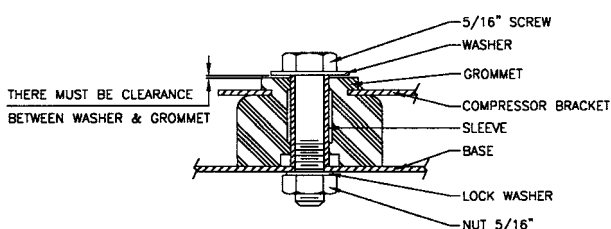
Low Torque Start

### SCHEMATIC WIRING DIAGRAM - C.S.R.



Option for High Torque Start Only

### MOUNTING KIT



Since we are constantly improving our product ,  
the specification are subject to change without notice.

REV. DATE

07-07-04

C / N No.

0142/04



KULTHORN KIRBY PUBLIC CO., LTD.

THAILAND - *Tecumseh* LICENSEE

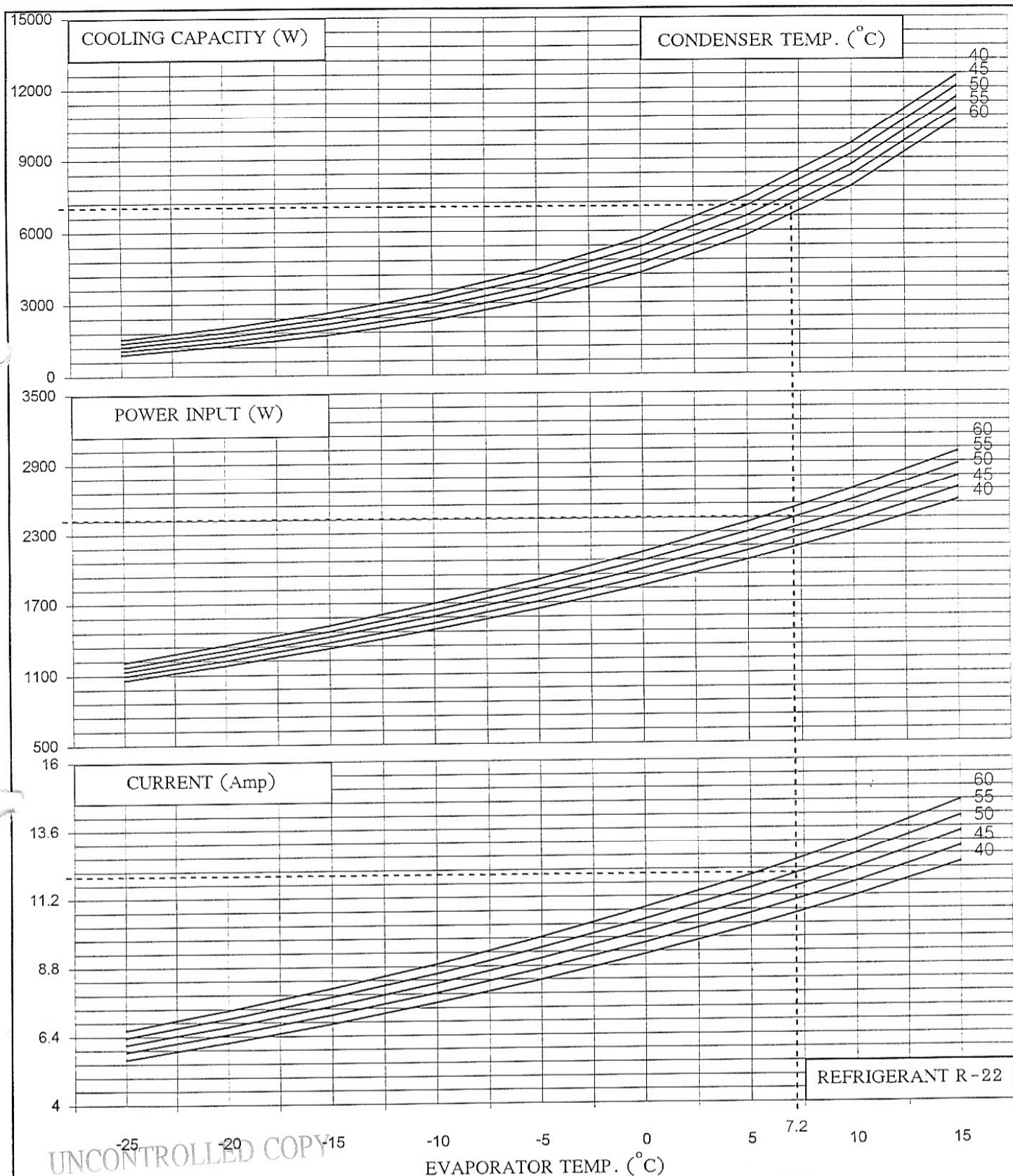
HERMETIC  
COMPRESSOR

AW 5524EK-2

4/6

PERFORMANCE CURVES

Electrical : 208-230 Volt 60 Hz 1 Phase Motor Type P.S.C



UNCONTROLLED COPY

Cooling Capacity 7100 W  
Power Input 2420 W  
Current 12 Amp

At rating  
Condition

PERFORMANCE CURVES  
FOR MOTOR COMPRESSOR

Prepared by: *[Signature]* Date: 16/05/04  
Approved by: *[Signature]* Date: 16/05/04

(Motor Design Supervisor)