



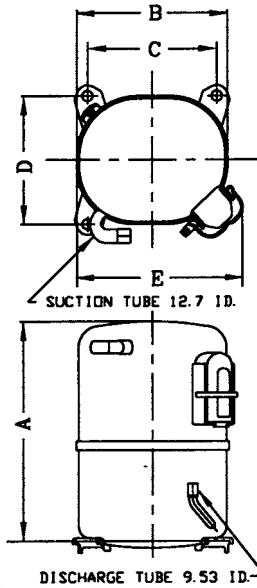
# KULTHORN KIRBY PUBLIC CO.,LTD.

## TECHNICAL SPECIFICATION

# HERMETIC COMPRESSOR

## AW5517EK-2

### PRINCIPAL DIMENSIONS - mm



A	289
B	223
C	192
D	192
E	239

**ELECTRICAL :** 208-230 Volt. 60 Hz. 1 Phase

### Nominal Performance

Cooling Capacity :	5,340	Watts ( 18,220 )	BTU/Hr
	4,592	Kcal/Hr	
Power Input :	1,850	Watts	
Lock Rotor Amps :	51.00	Amps	
Rated Load Amps :	8.60	Amps	
COP :	2.89	Watts/ Watts	

### Testing Conditions

Condensing Temperature :	54.4	° C
Evaporating Temperature :	+7.2	° C
Liquid Temperature :	46.1	° C
Return Gas Temperature :	35	° C
Ambient Temperature :	35	° C

### Application

Evaporating Range :	<b>HBP A/C</b>	:	0 ° C to +13 ° C
			Heat Pump : -23.3 ° C to +13 ° C

Refrigerant :	R22
Expansion :	Capillary Tube
Compressor Cooling :	Fan

### Compressor and Motor data

Compression Type :	Reciprocating
Displacement :	32.7 cc.
Oil Type :	Mineral Oil
Oil Charge :	964 cc.
Motor Type :	<b>P.S.C.</b> ; 2 Pole 3500 r / m
Voltage Range :	198-264 Volts 60 Hz.
Winding Resistance at 25 ° C	
Start :	3.67 Ohms
Run :	1.22 Ohms
Weight with Oil :	25.37 Kg.
Weight with Oil and Accessories :	25.90 Kg.

### Electrical Components

#### Motor Protector :

Type :	Internal Overload
Model Number :	KGE 656-10 (15HM1474-43)
Open / Close :	130-140 / 78-60 ° C
1st Cycle trip :	31 Amps (start) 52 Amps (main)

#### Motor Starter (CSR Only) :

Type :	Potential Relay
Model Number :	KGE 680-1 (GE3ARR3-A16A2)
Pick Up :	242-272 Volts.
Drop Out :	60-121 Volts.
Terminal Cover :	KGM 901-2

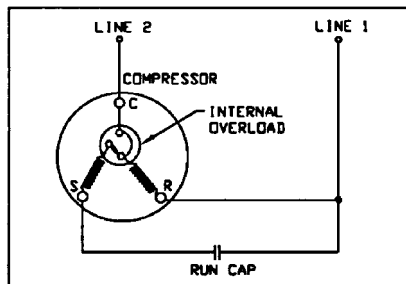
**Start Capacitor (CSR Only) :** 130-156  $\mu$ F 330 VAC.

**Run Capacitor :** 30  $\mu$ F 370/440 VAC.

### Mounting Kit

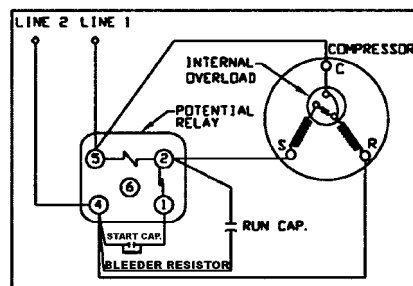
Rubber Grommet :	KGM 905
Sleeve Grommet :	KGM 903

### SCHEMATIC WIRING DIAGRAM - P.S.C.



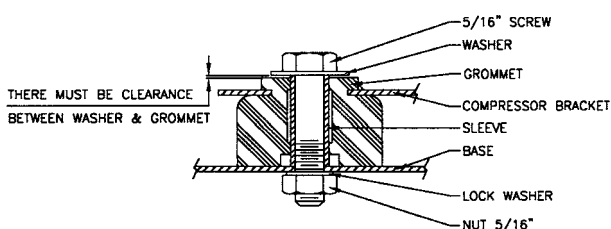
Low Torque Start

### SCHEMATIC WIRING DIAGRAM - C.S.R.



Option for High Torque Only

### MOUNTING KIT



Since we are constantly improving our product ,  
the specification are subject to change without notice.

REV. DATE

22-07-03

C / N No.

0154/03

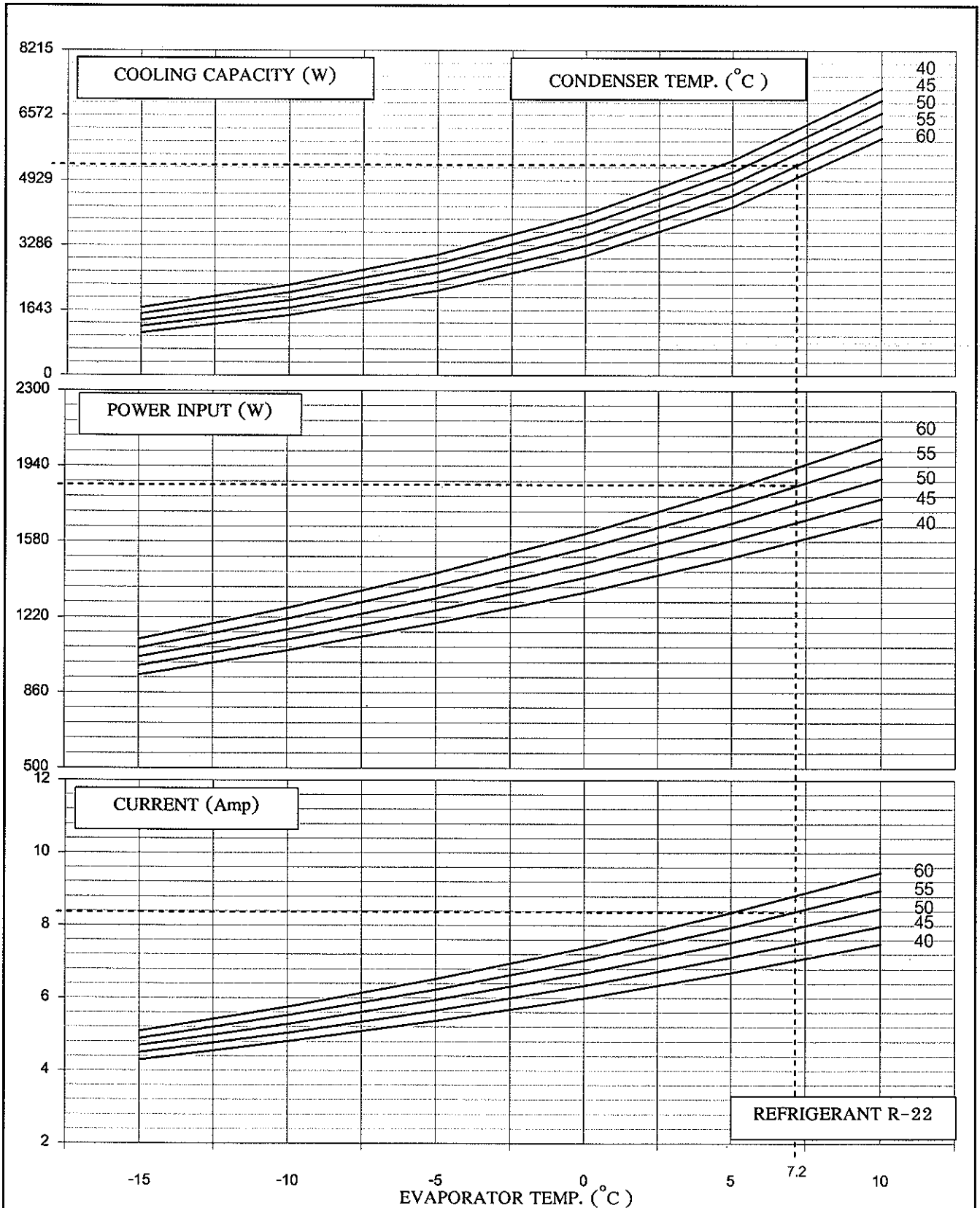


KULTHORN KIRBY PUBLIC CO.,LTD.

PERFORMANCE CURVE

HERMETIC  
COMPRESSOR  
AW 5517 EK-2

Electrical : 208-230 Volt 60 Hz 1 Phase Motor Type P.S.C



Cooling Capacity	5340 W	} At rating Condition
Power Input	1850 W	
Current	8.40 Amp	

Prepared by : T. Wasopoulos Date: 26 / 07 / 07  
 Approved by : L. Chomtzis Date: 28 / 7 / 07  
 (Supervisor)