

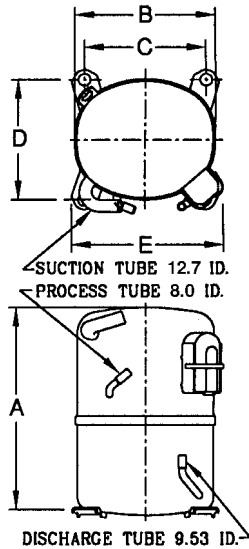


# KULTHORN KIRBY PUBLIC CO.,LTD.

## TECHNICAL SPECIFICATION

# HERMETIC COMPRESSOR AW5515EK-2P

### PRINCIPAL DIMENSIONS - mm



A	289
B	223
C	192
D	192
E	239

**ELECTRICAL :** 208-230 Volt. 60 Hz. 1 Phase

### Nominal Performance

Cooling Capacity :	4,870	Watts ( 16,616 )	BTU/Hr
	4,188	Kcal/Hr	
Power Input :	1,695	Watts	
Lock Rotor Amps :	47.00	Amps	
Rated Load Amps :	8.50	Amps	
COP :	2.87	Watts/ Watts	

### Testing Conditions

Condensing Temperature :	54.4	° C
Evaporating Temperature :	+7.2	° C
Liquid Temperature :	46.1	° C
Return Gas Temperature :	35	° C
Ambient Temperature :	35	° C

### Application

Evaporating Range :	<b>HBP A/C</b>	:	0° C to +13 ° C
Heat Pump :		:	-23.3° C to +13 ° C

Refrigerant :	R22
Expansion :	Capillary Tube
Compressor Cooling :	Fan

### Compressor and Motor data

Compression Type :	Reciprocating
Displacement :	30.5 cc.
Oil Type :	Mineral Oil
Oil Charge :	964 cc.
Motor Type :	<b>P.S.C.</b> ; 2 Pole 3500 r / m
Voltage Range :	198-264 Volts 60 Hz.
Winding Resistance at 25 ° C	
Start :	3.67 Ohms
Run :	1.22 Ohms

Weight with Oil :	24.25	Kg.
Weight with Oil and Accessories :	24.56	Kg.

### Electrical Components

#### Motor Protector :

Type :	Internal Overload
Model Number :	KGE 656-10 (15HM1474-43)
Open / Close :	130-140 / 78-60 ° C
1st Cycle trip :	31 Amps (start) 52 Amps (main)

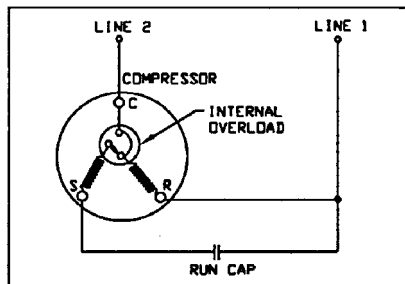
#### Motor Starter (CSR Only) :

Type :	Potential Relay
Model Number :	KGE 680-1 (GE3ARR3-A16A2)
Pick Up :	242-272 Volts.
Drop Out :	60-121 Volts.
Terminal Cover :	KGM 901-2
<b>Start Capacitor (CSR Only) :</b>	130-156 μ F 330 VAC.
<b>Run Capacitor :</b>	25 μ F 370/440 VAC.

### Mounting Kit

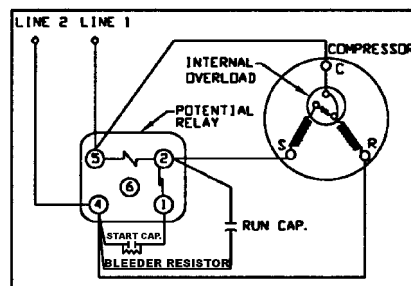
Rubber Grommet :	KGM 905
Sleeve Grommet :	KGM 903

### SCHEMATIC WIRING DIAGRAM - P.S.C.



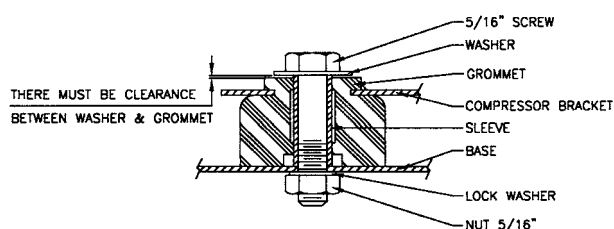
Low Torque Start

### SCHEMATIC WIRING DIAGRAM - C.S.R.



Option for High Torque Only

### MOUNTING KIT



Since we are constantly improving our product ,  
the specification are subject to change without notice.

REV. DATE

07-07-04

C / N No.

0142/04





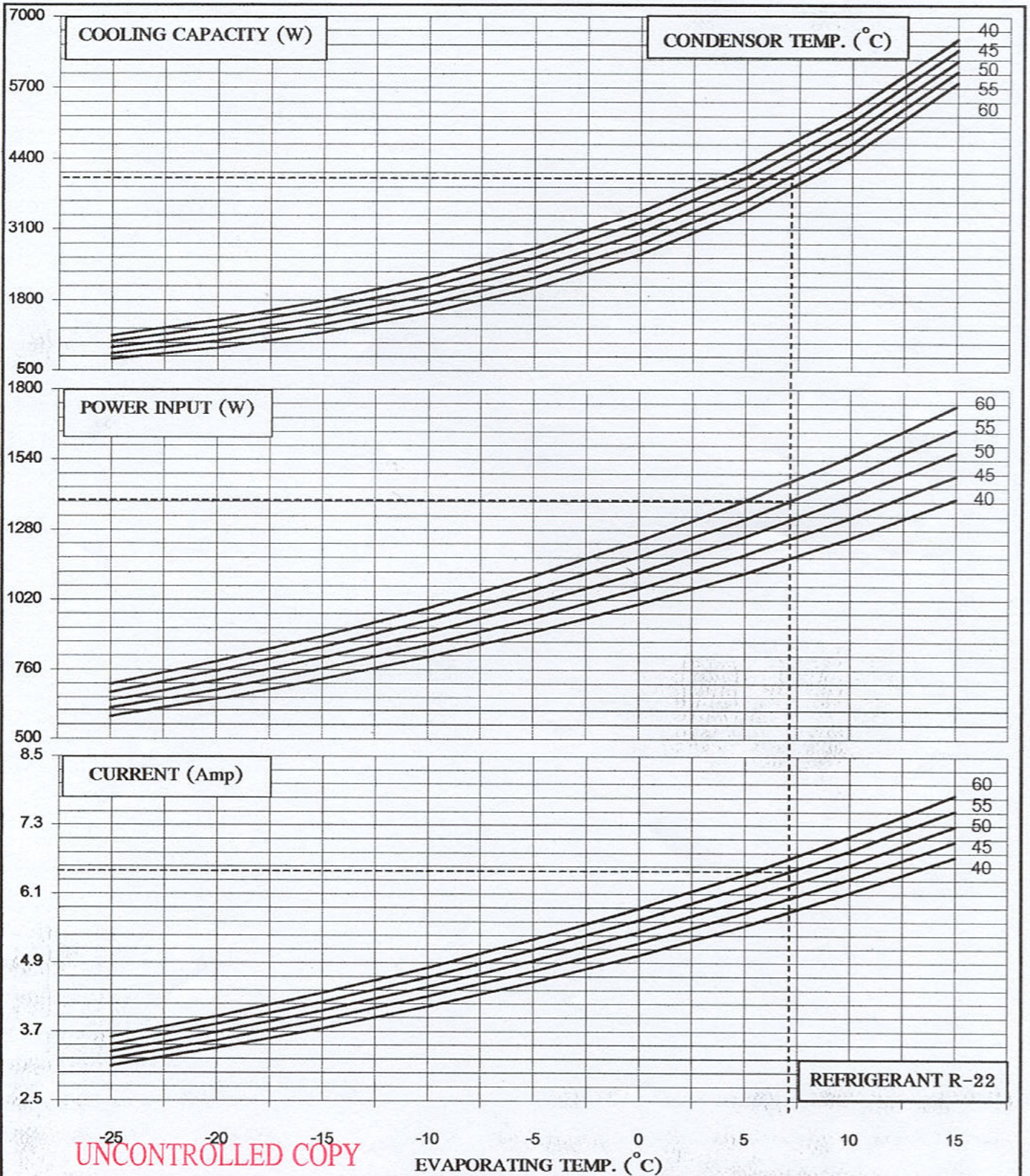
KULTHORN KIRBY PUPBLIC CO.,LTD.

THAILAND - *Tecumseh* LICENSEE

HERMETIC  
COMPRESSOR

AW 5515EK-L3

PERFORMANCE CURVES Electrical : 220-240 Volt 50 Hz 1 Phase Motor Type P.S.C/C.S.R



UNCONTROLLED COPY

Cooling Capacity	4085 W	} At rating Condition
Power Input	1390 W	
Current	6.50 Amp	

PERFORMANCE CURVES

Prepared by: *S. Senoma* Date: *27, 11, 01*

Approved by: *Sungwan* Date: *27, 11, 01*

(Motor Design & Product Development Supervisor)