

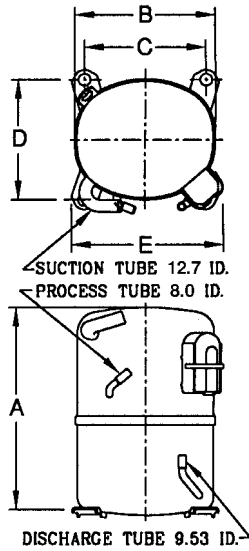


KULTHORN KIRBY PUBLIC CO.,LTD.

TECHNICAL SPECIFICATION

HERMETIC COMPRESSOR AW5513EK-2P

PRINCIPAL DIMENSIONS - mm



A	289
B	223
C	192
D	192
E	239

ELECTRICAL : 208-230 Volt. 60 Hz. 1 Phase

Nominal Performance

Cooling Capacity :	4,323	Watts (14,750)	BTU/Hr
	3,717	Kcal/Hr	
Power Input :	1,470	Watts	
Lock Rotor Amps :	40.00	Amps	
Rated Load Amps :	6.77	Amps	
COP :	2.94	Watts/ Watts	

Testing Conditions

Condensing Temperature :	54.4	° C
Evaporating Temperature :	+7.2	° C
Liquid Temperature :	46.1	° C
Return Gas Temperature :	35	° C
Ambient Temperature :	35	° C

Application

Evaporating Range :	HBP A/C	:	0° C to +13 ° C
Heat Pump :		:	-23.3° C to +13 ° C

Refrigerant :	R22
Expansion :	Capillary Tube
Compressor Cooling :	Fan

Compressor and Motor data

Compression Type :	Reciprocating
Displacement :	27.8 cc.
Oil Type :	Mineral Oil
Oil Charge :	964 cc.
Motor Type :	C.S.R. ; 2 Pole 3500 r / m
Voltage Range :	198-264 Volts 60 Hz.
Winding Resistance at 25 ° C	
Start :	3.87 Ohms
Run :	1.53 Ohms
Weight with Oil :	24.53 Kg.
Weight with Oil and Accessories :	25.00 Kg.

Electrical Components

Motor Protector :

Type :	Internal Overload
Model Number :	KGE 656-4 (15HM1472-43)
Open / Close :	115-125 / 78-60 ° C
1st Cycle trip :	29 Amps (start) 47 Amps (main)

Motor Starter (CSR Only) :

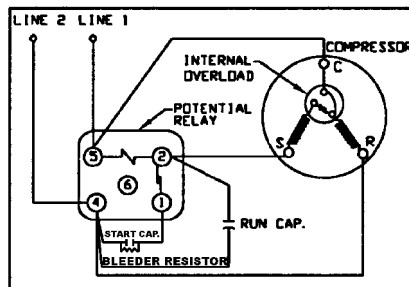
Type :	Potential Relay
Model Number :	KGE 680-7 (GE3ARR3-U3P2)
Pick Up :	162-175 Volts.
Drop Out :	40-90 Volts.
Terminal Cover :	KGM 901-2
Start Capacitor (CSR Only) :	130-156 μ F 330 VAC.
Run Capacitor :	25 μ F 370/440 VAC.

Mounting Kit

Rubber Grommet :	KGM 905
Sleeve Grommet :	KGM 903

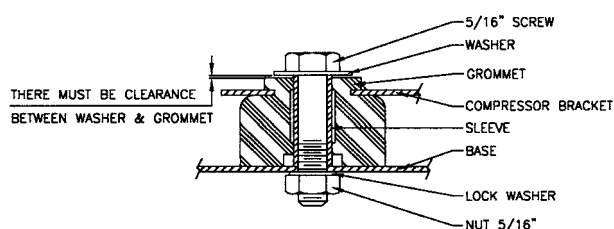
SCHEMATIC WIRING DIAGRAM -

SCHEMATIC WIRING DIAGRAM - C.S.R.



High Torque Start

MOUNTING KIT



Since we are constantly improving our product ,
the specification are subject to change without notice.

REV. DATE

07-07-04

C / N No.

0142/04

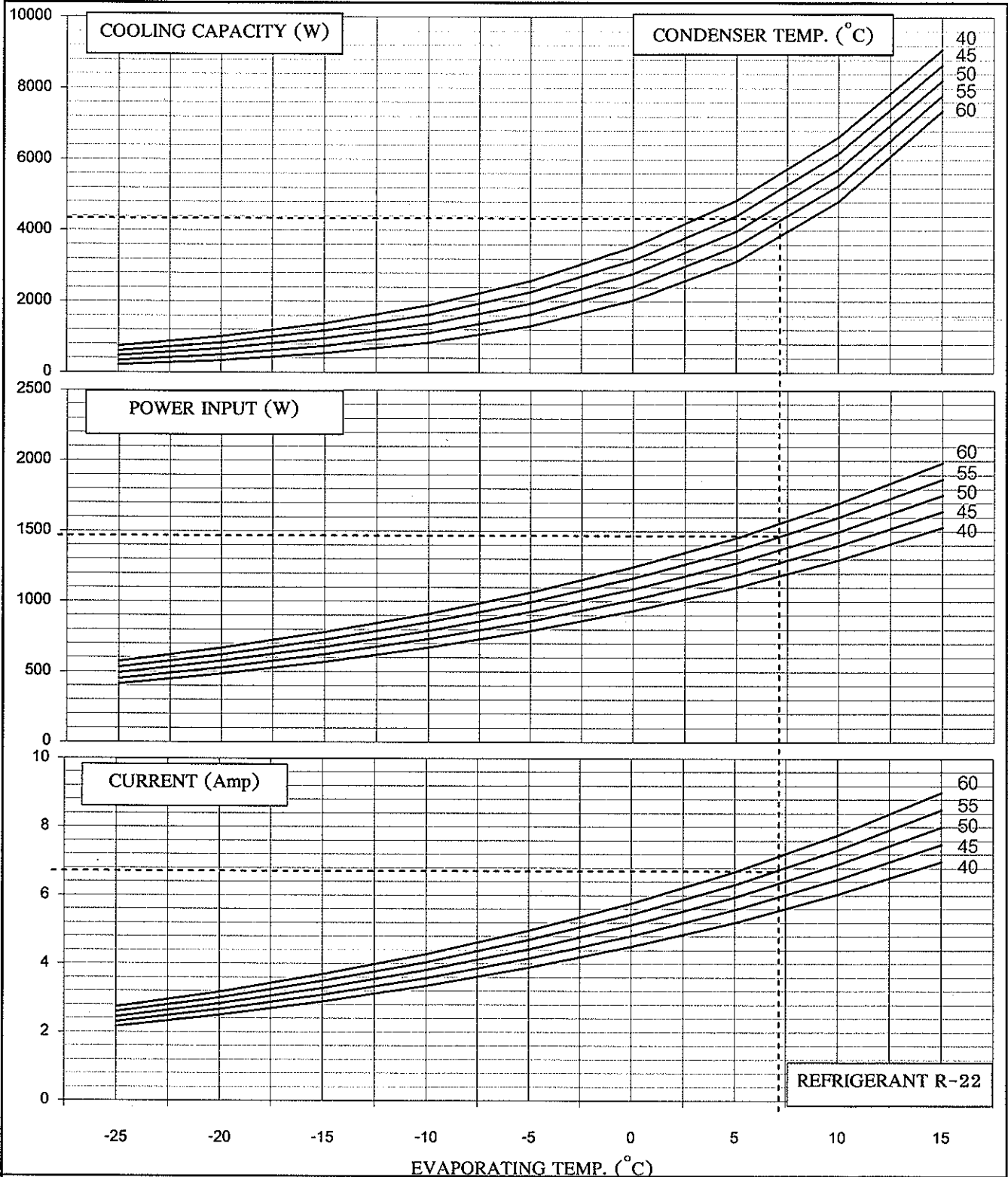


KULTHORN KIRBY PUBLIC CO., LTD.

HERMETIC
COMPRESSOR
AW 5513 EK-2

PERFORMANCE CURVE

Electrical : 208-230 Volt 60 Hz 1 Phase Motor Type C.S.R



Cooling Capacity	4323	W	} At rating Condition	Prepared by : <i>T. Wapras</i> Date: <i>26, 07, 07</i>
Power Input	1470	W		Approved by : <i>L. Chomitas</i> Date: <i>26, 7, 07</i>
Current	6.77	Amp		(Supervisor)