



# KULTHORN KIRBY PUBLIC CO.,LTD.

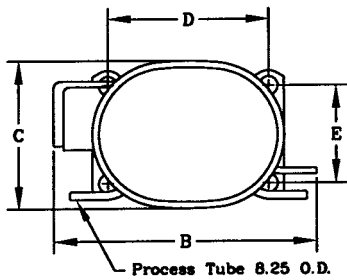
## TECHNICAL SPECIFICATION

### HERMETIC COMPRESSOR

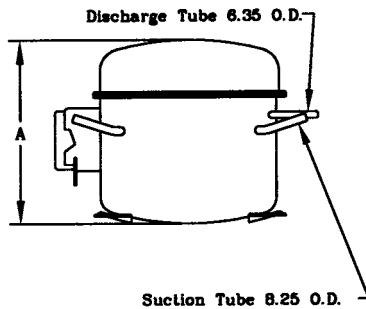
#### AE7426EK-2

#### High Torque Start

### PRINCIPAL DIMENSIONS - mm



A	201
B	277
C	159
D	165
E	102



**ELECTRICAL :** 208-230 Volt. 60 Hz. 1 Phase

### Nominal Performance

Cooling Capacity :	785	Watts ( 2,678 )	BTU/Hr
	675	Kcal/Hr	
Power Input :	577	Watts	
Lock Rotor Amps :	16.4	Amps	
Rated Load Amps :	3.3	Amps	
COP :	1.36	Watts/ Watts	

### Testing Conditions

Condensing Temperature :	54.4	°C
Evaporating Temperature :	-6.7	°C
Liquid Temperature :	46.1	°C
Return Gas Temperature :	35	°C
Ambient Temperature :	35	°C

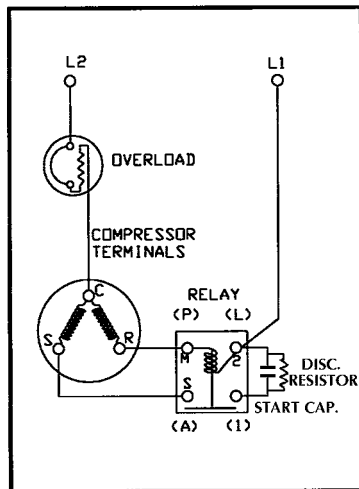
### Application

Evaporating Range :	<b>MBP</b> @ -23.3 °C to -1.1 °C
Refrigerant :	R22
Expansion :	Capillary Tube
Compressor Cooling :	Fan

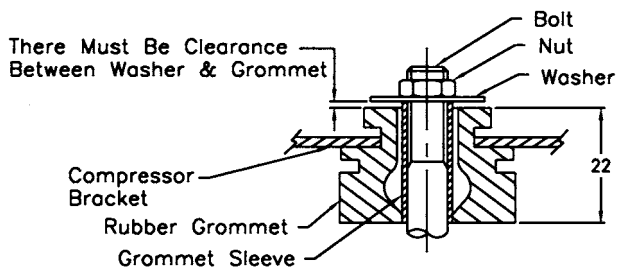
### Compressor and Motor data

Compression Type :	Reciprocating
Displacement :	8.85 cc.
Oil Type :	Mineral Oil
Oil Charge :	487 cc.
Motor Type :	<b>C.S.I.R.</b> ; 2 Pole 3500 r / m
Voltage Range :	187 - 264 Volts 60 Hz.
Winding Resistance at 25 °C	
Start :	17.44 Ohms
Run :	3.57 Ohms
Weight with Oil :	11.10 Kg.
Weight with Oil and Accessories :	11.50 Kg.

### SCHEMATIC WIRING DIAGRAM - C.S.I.R.



### MOUNTING KIT



### Electrical Components

#### Motor Protector :

Type :	External 3/4"
Model Number :	KME 660-24/C (MRP38AMN)
Open / Close :	115-125 / 78-60 °C
1st Cycle trip at 25 °C :	11.4 Amps

#### Motor Starter :

Type :	Current Relay
Model Number :	KME 684-8 (9660A251-161)
Pick Up (max.) :	9.6 Amps
Drop Out (min.) :	8.4 Amps
Terminal Cover :	KMD 901-5

**Start Capacitor :** 40 μF 330 VAC.

**Run Capacitor :** - μF - VAC.

**Disch. Resistor :** 15000 Ohms 2 W

### Mounting Kit

Rubber Grommet :	KMD 905-3
Sleeve Grommet :	KMD 903-2
Washer :	KEB 387

Since we are constantly improving our product , the specification are subject to change without notice.

REV. DATE

01-02-05

C / N No.

0019/05