



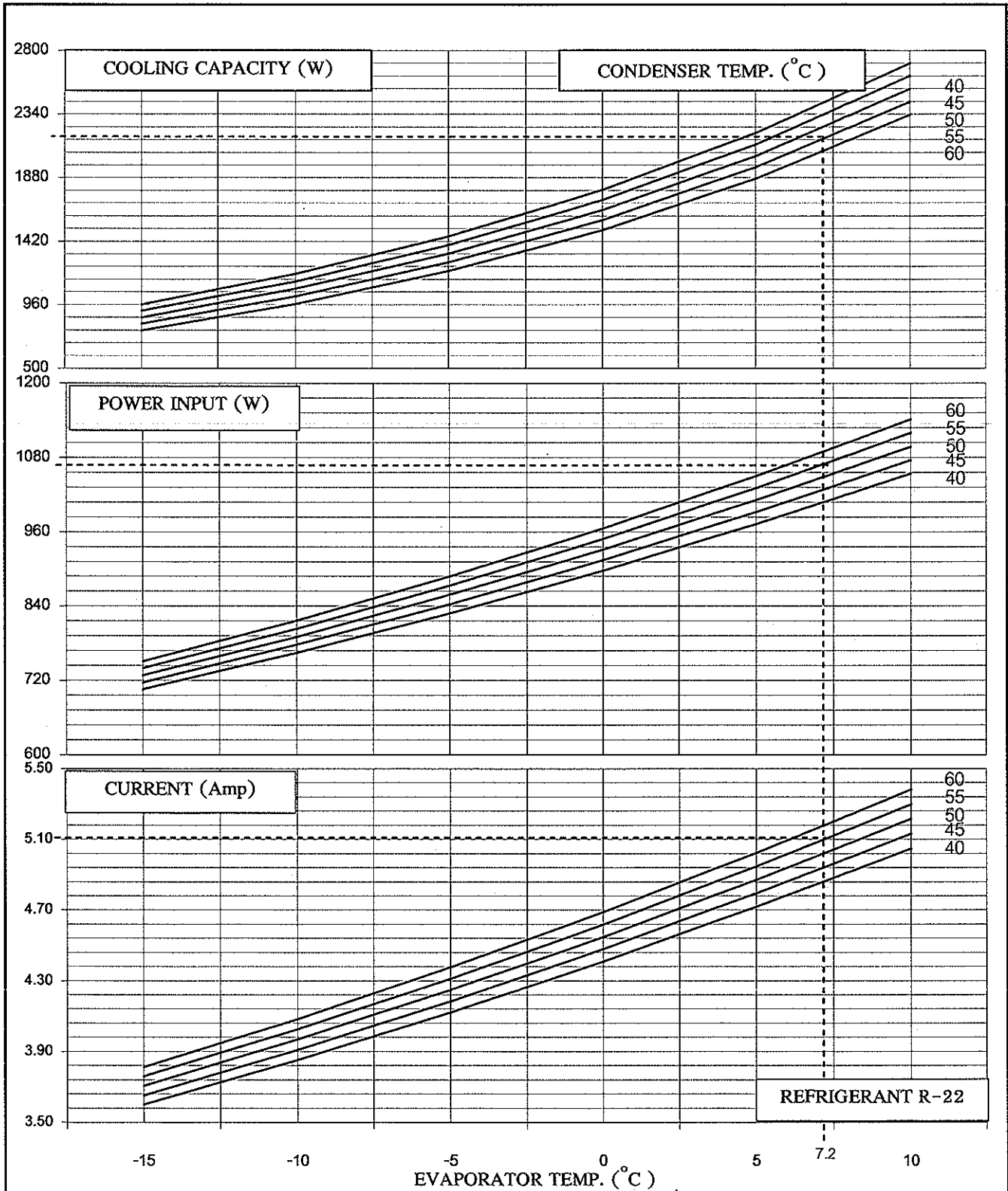
KULTHORN KIRBY PUBLIC CO., LTD.

PERFORMANCE CURVER

HERMETIC
COMPRESSOR

AE 4474EK-2

Electrical : 208-230 Volt 60 Hz 1 Phase Motor Type C.S.R



REFRIGERANT R-22

Cooling Capacity	2165	W	} At rating Condition
Power Input	1070	W	
Current	5.1	Amp	

Prepared by : *[Signature]* Date: *16* / *04* / *06*
 Approved by : *[Signature]* Date: *16* / *8* / *06*
 (Supervisor)



KULTHORN KIRBY PUBLIC CO.,LTD.

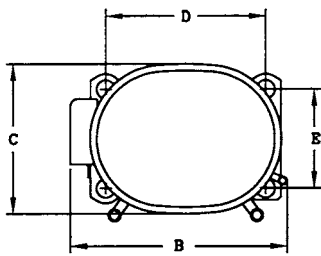
TECHNICAL SPECIFICATION

HERMETIC COMPRESSOR

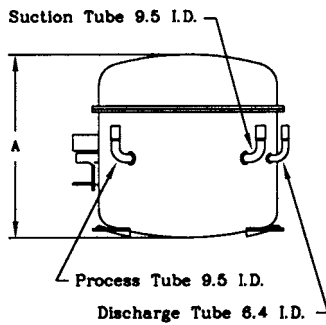
AE4474EK-2SR

High Torque Start

PRINCIPAL DIMENSIONS - mm



A	214
B	277
C	159
D	165
E	102



ELECTRICAL : 208-230 Volt. 60 Hz. 1 Phase

Nominal Performance

Cooling Capacity :	2,165 Watts (7,387) BTU/Hr
	1,862 Kcal/Hr
Power Input :	1,070 Watts
Lock Rotor Amps :	21.2 Amps
Rated Load Amps :	5.1 Amps
COP :	2.02 Watts/ Watts

Testing Conditions

Condensing Temperature :	54.4 °C
Evaporating Temperature :	+7.2 °C
Liquid Temperature :	46.1 °C
Return Gas Temperature :	35 °C
Ambient Temperature :	35 °C

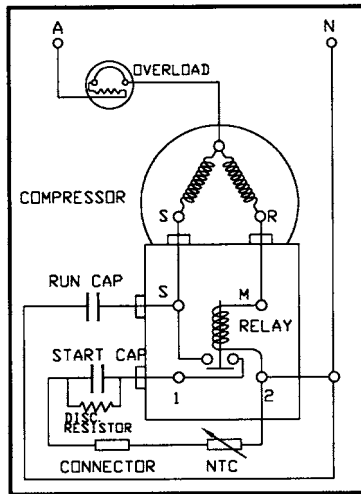
Application

Evaporating Range :	HBP @ 0 °C to +12.7 °C
Refrigerant :	R22
Expansion :	Capillary Tube
Compressor Cooling :	Fan

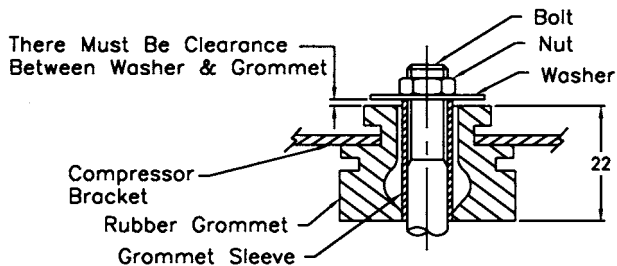
Compressor and Motor data

Compression Type :	Reciprocating
Displacement :	14.14 cc.
Oil Type :	Mineral Oil
Oil Charge :	385 cc.
Motor Type :	C.S.R. ; 2 Pole 3500 r / m
Voltage Range :	187 - 264 Volts 60 Hz.
Winding Resistance at 25 °C	
Start :	8.15 Ohms
Run :	2.78 Ohms
Weight with Oil :	11.80 Kg.
Weight with Oil and Accessories :	12.50 Kg.

SCHEMATIC WIRING DIAGRAM - C.S.R.



MOUNTING KIT



Electrical Components

Motor Protector :

Type :	External 3/4"
Model Number :	KME 666-2/C
Open / Close :	130-140 / 61-43 °C
1st Cycle trip at 25 °C :	13 Amps

Motor Starter :

Type :	Current Relay
Model Number :	KME 682-25N (9660A243N-161)
Pick Up (max.) :	9.6 Amps
Drop Out(min.) :	8.4 Amps
Terminal Cover :	KMD 901-5

Start Capacitor : 40 μF 330 VAC.

Run Capacitor : 15 μF 440 VAC.

Disch. Resistor : 15000 Ohms 2 W

Mounting Kit

Rubber Grommet :	KMD 905-3
Sleeve Grommet :	KMD 903-2
Washer :	KEB 387

Since we are constantly improving our product ,
the specification are subject to change without notice.

REV. DATE

01-02-05

C / N No.

0019/05