

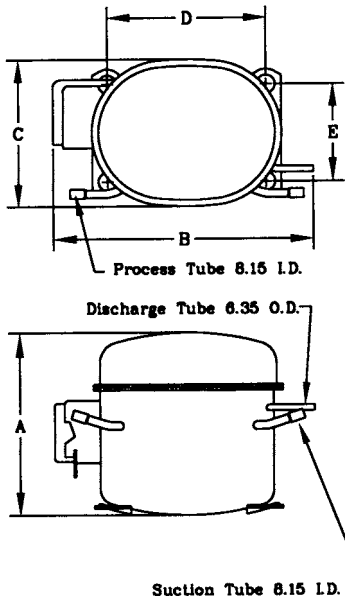


# KULTHORN KIRBY PUBLIC CO.,LTD.

## TECHNICAL SPECIFICATION

**HERMETIC COMPRESSOR**  
**AE4440Y-3**  
 High Torque Start

### PRINCIPAL DIMENSIONS - mm



A	202
B	277
C	159
D	165
E	102

**ELECTRICAL : 100 Volt. 50/60 Hz. 1 Phase**

### Nominal Performance

Cooling Capacity :	1,090 / 1,265	Watts ( 3,719 / 4,316 )	BTU/Hr
	937 / 1,088	Kcal/Hr	
Power Input :	545 / 629	Watts	
Lock Rotor Amps :	30.00 / 30.00	Amps	
Rated Load Amps :	7.78 / 7.67	Amps	
COP :	2.00 / 2.01	Watts/ Watts	

### Testing Conditions

Condensing Temperature :	54.4	° C
Evaporating Temperature :	+7.2	° C
Liquid Temperature :	46.1	° C
Return Gas Temperature :	35	° C
Ambient Temperature :	35	° C

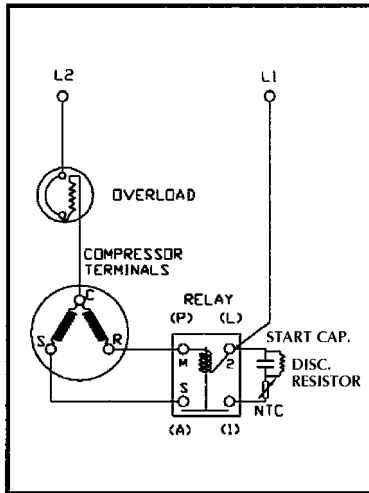
### Application

Evaporating Range :	<b>HBP</b>	@ 0	° C to +12.7 ° C
Refrigerant :	R134a		
Expansion :	Capillary Tube		
Compressor Cooling :	Fan		

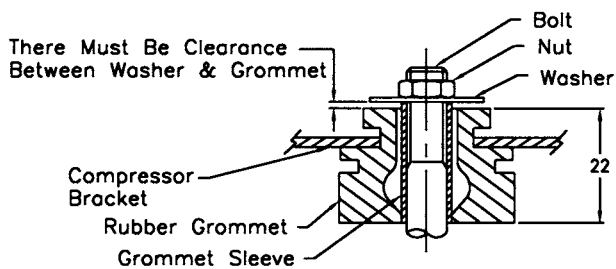
### Compressor and Motor data

Compression Type :	Reciprocating
Displacement :	12.05 cc.
Oil Type :	Polyolester Oil
Oil Charge :	357 cc.
Motor Type :	<b>C.S.I.R.</b> ; 2 Pole 2880 / 3500 r / m
Voltage Range :	90 - 110 Volts 50/60 Hz.
Winding Resistance at 25 ° C	
Start :	3.83 Ohms
Run :	0.95 Ohms
Weight with Oil :	11.20 Kg.
Weight with Oil and Accessories :	11.57 Kg.

### SCHEMATIC WIRING DIAGRAM - C.S.I.R.



### MOUNTING KIT



### Electrical Components

#### Motor Protector :

Type :	External 3/4"
Model Number :	KME 664-2/C (MRT24AJN-69)
Open / Close :	115-125 / 78-60 ° C
1st Cycle trip at 25 ° C :	18.60 Amps

#### Motor Starter :

Type :	Current Relay
Model Number :	KME 682-19NT (9660A243NT-187)
Pick Up (max.) :	20.0 Amps
Drop Out(min.) :	17.60 Amps
Terminal Cover :	KMD 901-5
Start Capacitor :	243-293 μ F 250 VAC.
Run Capacitor :	No μ F No VAC.
Disch. Resistor :	15000 Ohms 2 W

### Mounting Kit

Rubber Grommet :	KMD 905-3
Sleeve Grommet :	KMD 903-2
Washer :	KEB 387

Since we are constantly improving our product ,  
 the specification are subject to change without notice.

REV. DATE

03-09-03

C / N No.

0189/03