



# KULTHORN KIRBY PUBLIC CO.,LTD.

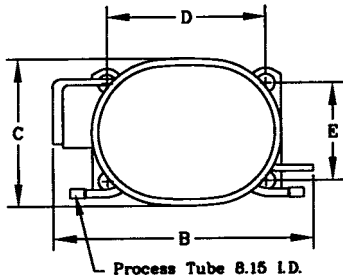
## TECHNICAL SPECIFICATION

### HERMETIC COMPRESSOR

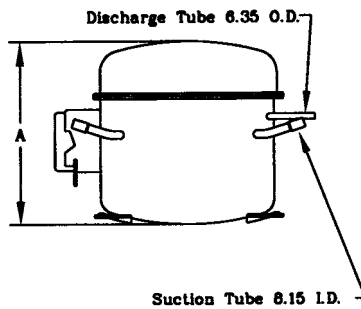
#### AE4440Y-2

#### High Torque Start

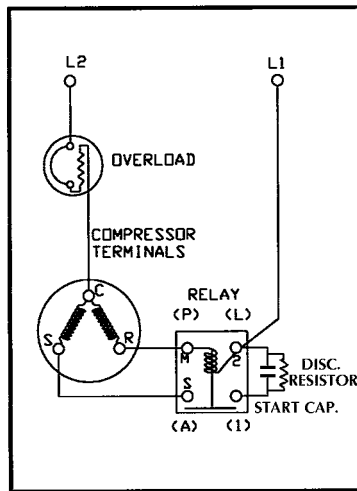
### PRINCIPAL DIMENSIONS - mm



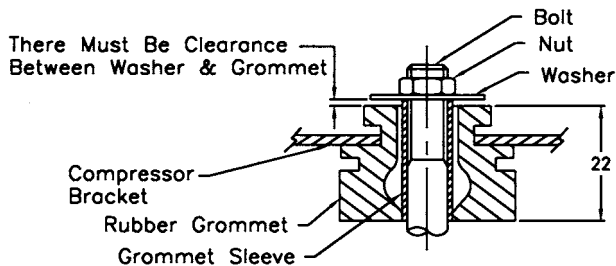
A	202
B	277
C	159
D	165
E	102



### SCHEMATIC WIRING DIAGRAM - C.S.I.R.



### MOUNTING KIT



**ELECTRICAL : 208-230 Volt. 60 Hz. 1 Phase**

### Nominal Performance

Cooling Capacity :	1,230 Watts ( 4,197 ) BTU/Hr
	1,058 Kcal/Hr
Power Input :	610 Watts
Lock Rotor Amps :	15.0 Amps
Rated Load Amps :	3.5 Amps
COP :	2.02 Watts/ Watts

### Testing Conditions

Condensing Temperature :	54.4 °C
Evaporating Temperature :	+7.2 °C
Liquid Temperature :	46.1 °C
Return Gas Temperature :	35 °C
Ambient Temperature :	35 °C

### Application

Evaporating Range :	<b>HBP</b> @ 0 °C to +12.7 °C
Refrigerant :	R134a
Expansion :	Capillary Tube
Compressor Cooling :	Fan

### Compressor and Motor data

Compression Type :	Reciprocating
Displacement :	12.05 cc.
Oil Type :	Polyolester Oil
Oil Charge :	357 cc.
Motor Type :	<b>C.S.I.R.</b> ; 2 Pole 3500 r / m
Voltage Range :	187 - 264 Volts 60 Hz.
Winding Resistance at 25 °C	
Start :	18.50 Ohms
Run :	4.23 Ohms
Weight with Oil :	11.83 Kg.
Weight with Oil and Accessories :	12.24 Kg.

### Electrical Components

#### Motor Protector :

Type :	External 3/4"
Model Number :	KME 664-5/C (MRP26ALL-34)
Open / Close :	100-110 / 78-60 °C
1st Cycle trip at 25 °C :	15.1 Amps

#### Motor Starter :

Type :	Current Relay
Model Number :	KME 684-8 (9660A251-161)
Pick Up (max.) :	9.6 Amps
Drop Out(min.) :	8.4 Amps
Terminal Cover :	KMD 901-5

#### Start Capacitor :

40 μF 330 VAC.

#### Run Capacitor :

No μF No VAC.

#### Disch. Resistor :

15000 Ohms 2 W

### Mounting Kit

Rubber Grommet :	KMD 905-3
Sleeve Grommet :	KMD 903-2
Washer :	KEB 387

Since we are constantly improving our product ,  
the specification are subject to change without notice.

REV. DATE

01-02-05

C / N No.

0019/05