



KULTHORN KIRBY PUBLIC CO.,LTD.

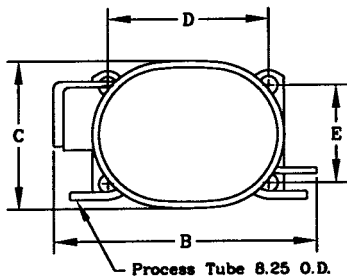
TECHNICAL SPECIFICATION

HERMETIC COMPRESSOR

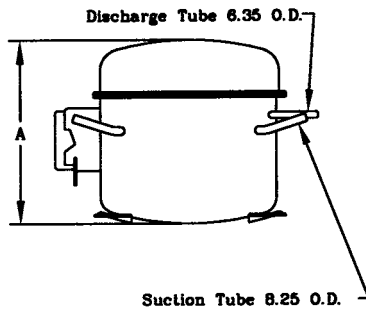
AE4430EK-2SR

High Torque Start

PRINCIPAL DIMENSIONS - mm



A	202
B	277
C	159
D	165
E	102



ELECTRICAL : 208-230 Volt. 60 Hz. 1 Phase

Nominal Performance

Cooling Capacity :	940	Watts (3,207)	BTU/Hr
	808	Kcal/Hr	
Power Input :	585	Watts	
Lock Rotor Amps :	15.9	Amps	
Rated Load Amps :	2.85	Amps	
COP :	1.61	Watts/ Watts	

Testing Conditions

Condensing Temperature :	54.4	°C
Evaporating Temperature :	+7.2	°C
Liquid Temperature :	46.1	°C
Return Gas Temperature :	35	°C
Ambient Temperature :	35	°C

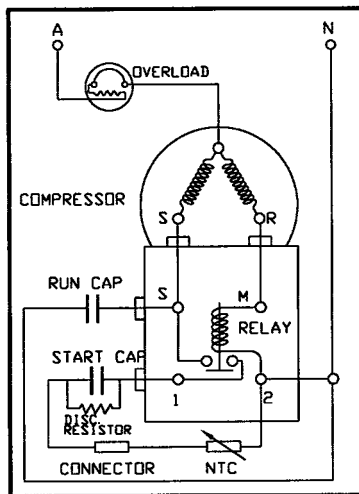
Application

Evaporating Range :	HBP @ 0 °C to +12.7 °C
Refrigerant :	R22
Expansion :	Capillary Tube
Compressor Cooling :	Fan

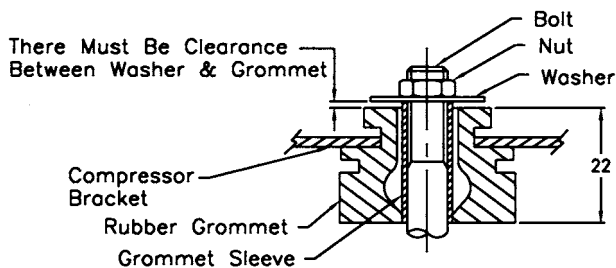
Compressor and Motor data

Compression Type :	Reciprocating
Displacement :	6.92 cc.
Oil Type :	Mineral Oil
Oil Charge :	607 cc.
Motor Type :	C.S.R. ; 2 Pole 3500 r / m
Voltage Range :	187 - 264 Volts 60 Hz.
Winding Resistance at 25 °C	
Start :	17.00 Ohms
Run :	4.20 Ohms
Weight with Oil :	11.14 Kg.
Weight with Oil and Accessories :	11.54 Kg.

SCHEMATIC WIRING DIAGRAM - C.S.R.



MOUNTING KIT



Electrical Components

Motor Protector :

Type :	External 3/4"
Model Number :	KME 660-7/C (MRA68242)
Open / Close :	90-100 / 70-52 °C
1st Cycle trip at 25 °C :	10.2 Amps

Motor Starter :

Type :	Current Relay
Model Number :	KME 682-1NT (9660A243NT-143)
Pick Up (max.) :	6.7 Amps
Drop Out (min.) :	5.9 Amps
Terminal Cover :	KMD 901-5

Start Capacitor : 40 μF 330 VAC.

Run Capacitor : 8 μF 440 VAC.

Disch. Resistor : 15000 Ohms 2 W

Mounting Kit

Rubber Grommet :	KMD 905-3
Sleeve Grommet :	KMD 903-2
Washer :	KEB 387

Since we are constantly improving our product ,
the specification are subject to change without notice.

REV. DATE

01-02-05

C / N No.

0019/05