



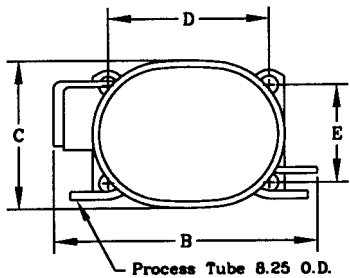
# KULTHORN KIRBY PUBLIC CO.,LTD.

## TECHNICAL SPECIFICATION

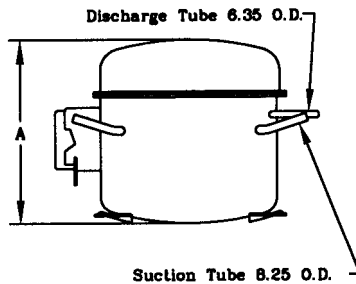
# HERMETIC COMPRESSOR AE2425ZK-2SR

High Torque Start

### PRINCIPAL DIMENSIONS - mm



A	214
B	277
C	159
D	165
E	102



**ELECTRICAL :** 208-230 Volt. 60 Hz. 1 Phase

### Nominal Performance

Cooling Capacity :	670	Watts ( 2,286 )	BTU/Hr
	576	Kcal/Hr	
Power Input :	546	Watts	
Lock Rotor Amps :	27.14	Amps	
Rated Load Amps :	2.61	Amps	
COP :	1.23	Watts/ Watts	

### Testing Conditions

Condensing Temperature :	54.4	°C
Evaporating Temperature :	-23.3	°C
Liquid Temperature :	32.2	°C
Return Gas Temperature :	32.2	°C
Ambient Temperature :	32.2	°C

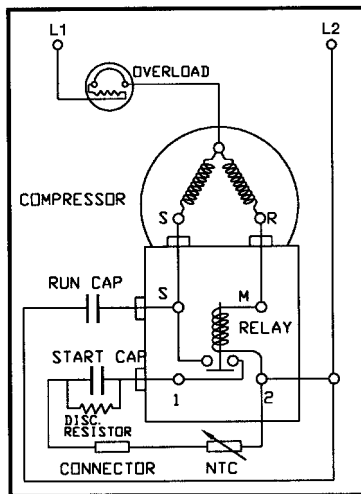
### Application

Evaporating Range :	<b>LBP</b> @ -40 °C to -12.2 °C
Refrigerant :	R404A/R507
Expansion :	Capillary Tube
Compressor Cooling :	Fan

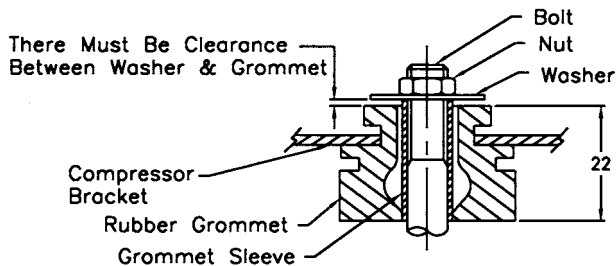
### Compressor and Motor data

Compression Type :	Reciprocating
Displacement :	14.14 cc.
Oil Type :	Polyolester Oil
Oil Charge :	480 cc.
Motor Type :	<b>C.S.R.</b> ; 2 Pole 3500 r / m
Voltage Range :	187 - 264 Volts 60 Hz.
Winding Resistance at 25 °C	
Start :	6.90 Ohms
Run :	3.20 Ohms
Weight with Oil :	12.11 Kg.
Weight with Oil and Accessories :	12.45 Kg.

### SCHEMATIC WIRING DIAGRAM - C.S.R.



### MOUNTING KIT



### Electrical Components

#### Motor Protector :

Type :	External 3/4"
Model Number :	KME 664-10/C
Open / Close :	115-125 / 78-60 °C
1st Cycle trip at 25 °C :	15.2 Amps

#### Motor Starter :

Type :	Current Relay
Model Number :	KME 682-30NT (9660A243NT-172)
Pick Up (max.) :	13 Amps
Drop Out(min.) :	11.2 Amps
Terminal Cover :	KMD 901-5

#### Start Capacitor :

40 μF 330 VAC.

#### Run Capacitor :

12 μF 440 VAC.

#### Disch. Resistor :

15000 Ohms 2 W

### Mounting Kit

Rubber Grommet :	KMD 905-3
Sleeve Grommet :	KMD 903-2
Washer :	KEB 387

Since we are constantly improving our product ,  
the specification are subject to change without notice.

REV. DATE

01-02-05

C / N No.

0019/05

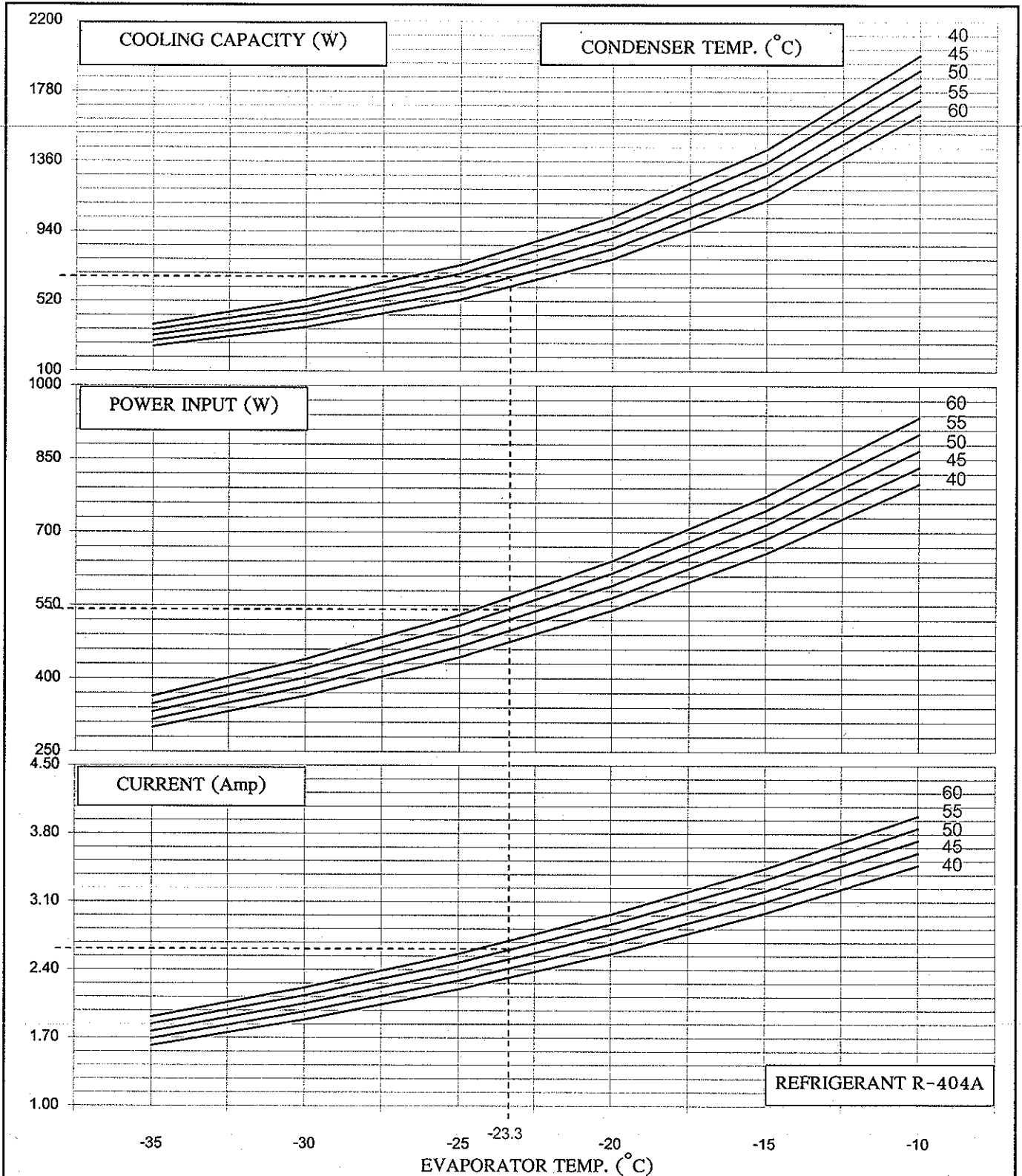


# KULTHORN KIRBY PUBLIC CO., LTD.

HERMETIC  
COMPRESSOR  
AE 2425ZK-2SR

## PERFORMANCE CURVE

Electrical : 208-230 Volt 60 Hz 1 Phase Motor Type C.S.R



Cooling Capacity	670	W	} At rating Condition
Power Input	546	W	
Current	2.61	Amp	

Prepared by : *T. W. Aronson* Date: *20, 06, 07*  
 Approved by : *C. Charito* Date: *20, 6, 50*  
 (Supervisor)